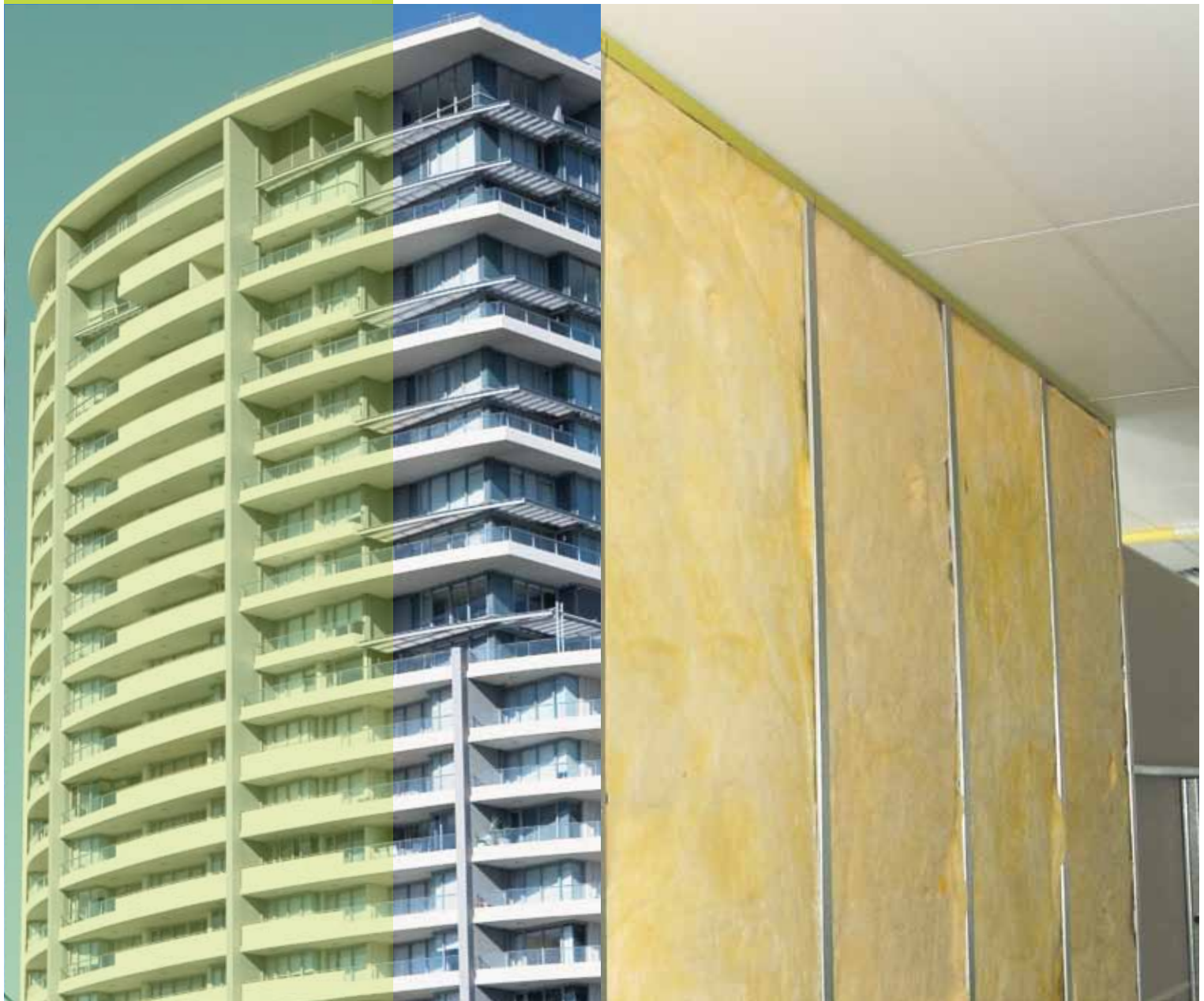


Quiet Batts

Fletcher Insulation Acoustic solutions for Partition Walls



Fletcher[™]
Insulation

*Creating an environmentally
sustainable future*

The building industry recognises the advantages of using glasswool acoustic insulation.

There has been a significant shift in the building industry to specifying and installing glasswool acoustic insulation over polyester for some very sound reasons;

- Glasswool provides improved performance for lower thickness meaning considerable cost savings.
- Glasswool is a proven performer and enjoys consistency of manufacture.
- New improved fibres are low itch, softer and stronger, providing full recovery of nominal thickness.
- Fletcher Insulation glasswool products carry accreditation from leading building authorities.

Importantly, many buildings are required by the Building Code of Australia (BCA) to use non combustible materials in wall systems. The suitability of building materials and structures is determined by testing to AS1530.1 – Combustibility test for materials.

In Australia glasswool is one of the few insulation products that meet the non-combustibility requirements of AS 1530.1, while other common insulation materials such as polyester fail to meet this BCA requirement.

Full information on the types of buildings that require non-combustible materials are available from Fletcher Insulation or by referring to the Building Code of Australia.

Fletcher Insulation glasswool products are manufactured from FBS-1 Bio-Soluble Glass Wool™. FBS-1 Bio-Soluble Glass Wool™ is classified as non-hazardous according to the criteria of the

Australian Safety and Compensation Council (formerly NOHSC). Approved Criteria for Classifying Hazardous Substances (NOHSC: 1008) 3rd Edition. Fletcher Insulation glasswool is safe to use, refer to our MSDS.



Approved by Unions

In April 2003, to reflect the latest medical & scientific facts, the Industry Code of Practice for the Safe Use of Rockwool & Glasswool Insulation was ratified between Insulation Manufacturers and a range of Unions here in Australia including the CFMEU, CEPU, EPU, and AMWU.

This Code provides advice and guidance for the safe use of Rockwool and Glasswool Insulation for our Australian Building Sites. The Code makes provision for additional, suitable measures to eliminate health risks to workers.

A full copy of the code can be found and downloaded from the Association Web Site www.icanz.com.au

ICANZ Insulation Council of Australia & New Zealand.

Glasswool is the most widely used insulation in Australia and worldwide. It can be installed with absolute confidence and the significant advantages of thermal, acoustic and fire protective insulation fully utilized.



Introducing the New 11kgm³ Quiet Batt Range

Nominal R-value	Nominal Thickness mm	Size mm	Pieces per pack	m ² per pack	Product Code
R1.2	50	1200 x 450	24	13.0	203511
	50	2700 x 450	24	29.2	203512
	50	1200 x 600	24	17.3	203513
	50	2700 x 600	16	25.9	203514
R1.8	75	1200 x 450	16	8.6	203711
	75	2700 x 450	24	29.2	203712
	75	1200 x 600	16	11.5	203713
	75	2700 x 600	16	25.9	203714
R2.1	90	1200 x 450	16	8.6	203911
	90	2700 x 450	24	29.2	203912
	90	1200 x 600	16	11.5	203913
	90	2700 x 600	16	25.9	203914

Quiet Batts are manufactured from FBS-1 Bio-Soluble Glass-Wool with a density of 11kg/m³ and are available in 50mm, 75mm and 90mm thicknesses. Designed to be a full height free standing insulation in steel stud partitions in commercial buildings, Quiet Batts are available in both 450mm and 600mm widths to press fit between steel studs allowing for quick installation.

Quiet Batts are lightweight and easy to cut and install in walls and partitions where sound control and improved thermal

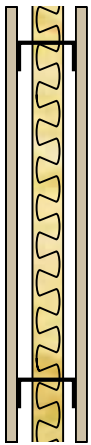
performance is required. As can be seen in the CSIRO test results Quiet Batts achieve superior results to polyester insulation when used in similar wall systems.

Quiet Batts are designed to give superior sound absorption and sound control at an economical cost as well as passing the test for combustibility AS 1530-1.



Test	Plasterboard Side A	Plasterboard Side B	Steel Studs	Insulation	Rw / Rw+Ctr	Test No.
A	1 x 13mm std core	1 x 13mm std core	92mm	Nil	36 / 29	CSIRO TL489d
B	1 x 13mm std core	1 x 13mm std core	92mm	50mm Quiet Batts 11kg/m ³	42 / 33	CSIRO TL489e
C	1 x 13mm std core	1 x 13mm std core	92mm	ISB3 poly	40 / 32	CSIRO TL489f
D	1 x 13mm std core	1 x 13mm std core	92mm	ISB5 poly	41 / 33	CSIRO TL489g
E	1 x 13mm Fire rated	1 x 13mm Fire rated	92mm	90mm Quiet Batts 11kg/m ³	45 / 37	CSIRO TL489i
F	1 x 13mm Fire rated	1 x 13mm Fire rated	92mm	90mm Polyester 14kg/m ³	44 / 36	CSIRO TL489k
G	1 x 16mm Fire rated	1 x 16mm Fire rated	92mm	75mm Quiet Batts 11kg/m ³	46 / 37	RMIT 1211/541/KC
H	1 x 16mm Fire rated	1 x 16mm Fire rated	92mm	Nil	40	RMIT 121027R
I	2 x 13mm Fire rated	2 x 13mm Fire rated	64mm DOUBLE	50 mm Quiet Batts 11kg/m ³	50	BCA DTC*

* BCA Deemed To Comply RW50 Vol.2 tble 3.8.6.2



50mm Quiet Batts

92mm Steel Stud,
13mm Standard Plasterboard
each side,
50mm Quiet Batts.

Rw = 42

Rw+Ctr = 33

[Reference Test B in chart.](#)

**50mm Quiet Batts
provide superior results than
85mm Polyester**



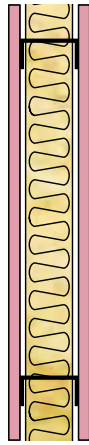
ISB5 Poly (85mm)

92mm Steel Stud,
13mm Standard Plasterboard
each side,
85mm PolyBatts.

Rw = 41

Rw+Ctr = 33

[Reference Test D in chart.](#)



90mm Quiet Batts

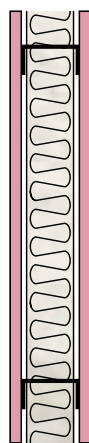
92mm Steel Stud,
13mm Fire Rated
Plasterboard each side,
90mm Quiet Batts.

Rw = 45

Rw+Ctr = 37

[Reference Test E in chart.](#)

**90mm Quiet Batts
provide superior results than
90mm Higher Density Polyester Batts**



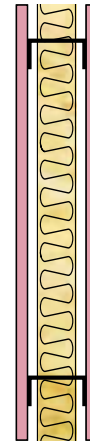
90mm Polyester 14kg/m³

92mm Steel Stud,
13mm Fire Rated
Plasterboard each side,
90mm Polyester Batts.

Rw = 44

Rw+Ctr = 36

[Reference Test F in chart.](#)



75mm Quiet batts

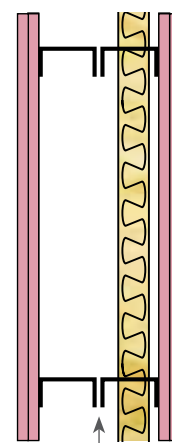
92mm Steel Stud,
16mm Fire Rated
Plasterboard each side,
75mm Quiet batts.

Rw = 46

Rw+Ctr = 37

[Reference Test G in chart.](#)

**Other common systems
featuring Quiet Batts**



50mm Quiet batts

64mm Steel Stud,
2 x 13mm Fire Rated
Plasterboard each side,
50mm Quiet Batts.

Rw = 50

[Reference Test I in chart.](#)

Air gap not less
than 20mm between rows





Fletcher Insulation - Australia's largest manufacturer of glasswool insulation

A division of Fletcher Building, Fletcher Insulation™ is the largest manufacturer of insulation products in Australia with a proud history of producing Australia's leading Insulation brands in Australia for over 55 years. Our vast product range includes the iconic brands of:

- > Pink Batts®
- > Insulco® Fat Batts
- > Sisalation®
- > Permastop® & Vapa-Chek™ Building Blankets

Providing environmentally sustainable insulation to save energy and reduce greenhouse emissions, Fletcher Insulation products are specified for all aspects of residential buildings, commercial buildings, air conditioning and industrial plants for all thermal, acoustic and protective applications. Fletcher Insulation manufactures Australia's largest range of insulation products and backs this up with on demand Technical Assistance.

Fletcher Insulation is proud to be the first and only insulation manufacturer in Australia to be awarded the GECA (Good Environmental Choice Australia) Eco-label for our Pink Batts and Fat Batts thermal and acoustic glasswool insulation product range making the decision easier when an environmentally sustainable solution is desired.

Be sure you get what you paid for. Fletcher Insulation's proven performance and consistency of manufacture is certified by third party accreditation.



Sustainability Credentials

We all understand that for a sustainable future we must conserve our energy resources and cut our greenhouse gas emissions. Insulation in its many forms, is a vital yet simple element in the design and construction goal of making our living and working habitats more energy efficient.

The correct use of insulation in our buildings saves enormous amounts of energy through the reduction in the need for artificial heating and cooling.

Glasswool is the most commonly used thermal insulation world wide with good reason. Performance and cost effectiveness.

Glasswool insulation is produced from renewable resources and approximately 70% recycled glass using a world leading manufacturing process that is cleaner and greener. That means glasswool insulation saves hundreds of times more energy than it takes to produce it. Our Intech furnaces emit 98% steam and emitted particles are reclaimed for recycling in the process.



Insulation and Energy Efficiency -

- Insulation reduces energy usage saving you money
- A one-time cost for a lifetime of savings
- Efficient use of energy reduces pollution
- The more insulation we use - the less energy we use



With the right understanding of how insulation can be used, building designs can create operating efficiencies by increasing equipment life, reducing the capacity of air conditioning plants and increasing productivity of workers through comfort and acoustics.

Efficiently insulated property, plant and equipment reduces the demand on power leading to lower capital investment, better use of generated power and the ability to meet regulatory guidelines. In short building with insulation is building sustainability.

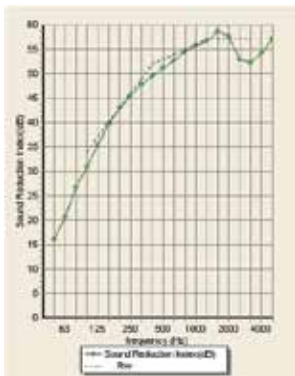
The world has become a hotter and noisier place

Australia's extreme climate has created a demand for building designers to maximize acoustic and thermal performance of their structures to improve conditions for people in both their homes and workplaces.

Especially at work, a more comfortable and quieter environment leads to increased productivity and reduces stress. Fletcher Insulation's thermal and acoustic range covers all requirements of architects, builders and specifiers and provides solutions for meeting provisions in the Building Code of Australia.

Product	Density	Nominal Thickness (mm)										
		25	38	50	65	70	75	90	100			
Quiet Batts	11kg/m ³			R1.2			R1.8	R2.1				✓
Silencer Batts	14kg/m ³			R1.3		R1.8	R1.9	R2.2		✓	✓	✓
Acousti-Therm	16kg/m ³				R1.5		R2.0			✓	✓	✓
Acoust-Therm (HD)	20kg/m ³							R2.5		✓	✓	✓
Pink Batts Wall (HD)	20kg/m ³					R2.0		R2.5		✓	✓	✓
Commercial Wall Batts	22kg/m ³	R0.7	R1.0	R1.4	R1.8							✓
SonoBatts	32kg/m ³			R1.5		R2.1		R2.7	R3.0	✓		

Visit www.insulation.com.au for information on the complete range.



Acousti-Max

Acousti-Max is a quick and accurate software tool for predicting the sound insulation of wall and floor/ceiling systems. Acousti-Max estimates the sound transmission loss in decibels over a range of frequencies, as well as the Weighted Sound Reduction Index of R_w and C_{tr} .

Using Acousti-Max software, Fletcher Insulation Technical Services enable specifiers to rapidly compare different types of wall construction including concrete, brick, hebel, timber and steel. Options include timber or steel stud combinations with various types of wall linings and number of layers to find out the optimum acoustic performance. Instant R_w and C_{tr} calculations take the guess-work out and avoids endless flicking through acoustic manuals.

SPECIFIER ADVISORY SERVICES

To advise on the changing requirements for energy efficiency and acoustic performance Fletcher Insulation Specifier Advisory Services are available on 1800 000 878.

Fletcher Insulation provides the experience, knowledge and products range to assist our customers in specifying and installing the correct insulation systems.

TECHNICAL - 1800 000 878 SALES - 1300 654 444

info@insulation.com.au www.insulation.com.au

Additional assistance on Total R-values can also be found in the ICANZ Insulation Handbook at www.icanz.org.au

Fletcher[™]
Insulation

Fletcher Insulation 161 Arthur St, Homebush, NSW Australia 2140
P (02) 9752 9200 F (02) 9764 3175 E info@insulation.com.au