

Noise Stop Board™

High density acoustic underlay

Product description and typical applications

Noise Stop Board™ is ideal for the control of room to room sound transmission in offices, classrooms, medical rooms, apartments or homes. It provides a barrier against unwanted sound. It is a heavy density glasswool panel that significantly reduces sound transmission when used in timber or steel stud walls. *Noise Stop Board* is typically fixed to partition studs under the plasterboard and thus acts as an isolating medium. *Noise Stop Board* can also be used in concrete floor systems and framed ceilings to create a barrier to sound transmission between floors.

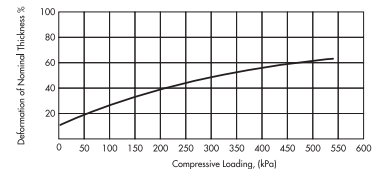
Noise Stop Board can be used in composite wall and flooring systems to achieve an impact and airborne noise reduction to adjoining areas. Previous testing has shown that *Noise Stop Board*, used as a separating medium in floating floor and double leaf wall systems, will elevate the IIC (Impact Isolation Class) performance of the system provided that rigid.

Physical characteristics

Thickness (mm)	13
Dimensions (mm)*	1200 x 914
Nominal Density (kg/m ³)	168
Area Per Pack (m ²)	11.0
Quantity Per Pack (Pieces)	10

Compressive strength

Noise Stop Board has excellent compressive strength and recovers to its nominal thickness even after prolonged compression. Deformation under compression loading is shown in the graph.



Impact noise control

Noise Stop Board can be used to reduce noise between upper and lower floors. It can significantly reduce the transmission of impact sound when installed between the floor membrane and the concrete floor. eg. *Noise Stop Board* laid under ceramic tiles on 4.5mm ceramic tile underlay achieves a Field Impact Isolation Class (FIIC) of 63.

Sound transmission loss

Partition Wall Systems	Insulation	Rw
90mm x 35mm thick timber stud with one layer of 10mm Soundstop® Plasterboard each side	Nil	39
90mm x 35mm thick timber stud with one layer of 10mm Soundstop Plasterboard each side and one layer of Fletcher Insulation's <i>Noise Stop Board</i> separating the plasterboard from the stud on one side.	13mm <i>Noise Stop Board</i>	46
90mm x 35mm thick timber stud with one layer of 10mm Soundstop Plasterboard each side and one layer of Fletcher Insulation's <i>Noise Stop Board</i> separating the plasterboard from the stud on one side only, and with Pink Batts® Silencer™ in the cavity.	50mm Pink Batts® Silencer™ 13mm <i>Noise Stop Board</i>	48

Green Star compliant

Fletcher Insulation is committed to providing environmentally sustainable products. Fletcher Insulation products have Zero Ozone Depleting Potential in both manufacture and composition, complying with the GreenStar Insulant ODP Emissions credit requirement. Air Quality is maintained with Total Volatile Organic Compounds (VOC) emissions below quantifiable levels.



AS1530.3 Early fire hazard properties of materials

Noise Stop Board exhibit the following characteristics when tested in accordance with AS1530 Part 3.

Ignitability Index	0
Spread of Flame Index	0
Heat Evolved Index	0
Smoke Developed Index	0-1

Moisture absorption

Tested in an atmosphere of 65% relative humidity at 20°C in accordance with British Standard 2972. The moisture content of Noise Stop Board is less than 0.1% by volume.

Alkalinity

Noise Stop Board will not support the corrosion of steel. When test in accordance with British Standard 3958 Noise Stop Board products are slightly alkaline, pH9 (neutral is pH7).

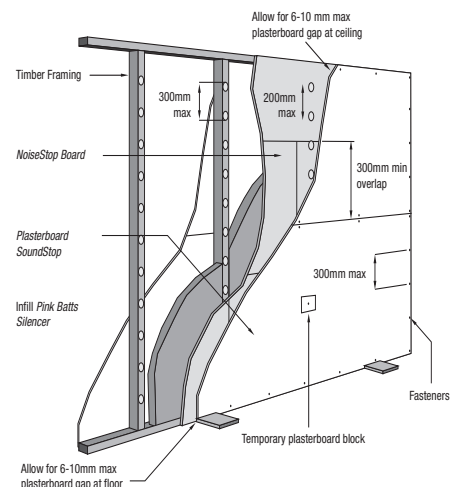
Acoustic performance

Noise Stop Board has the following sound absorption co-efficients when tested in accordance with AS1045 by the Reverberation Room Method. Tests were carried out with no air space behind the samples, and results are based on test reports from RMIT Department of Applied Physics.

Nominal Thickness (mm)	Sound absorption coefficients (reverberation) at frequencies (Hz) of:					
	125	250	500	1000	2000	NRC
13	0.00	0.10	0.35	0.70	0.90	0.50

Installation

Noise Stop Board is fixed to studs with stud adhesive only, at 200mm centres vertically, with no gaps at board joints or floor/wall/ceiling junctions. Temporarily fasten with single screw until SoundStop Plasterboard is installed. Conventionally fasten plasterboard horizontally using combination of adhesive and mechanical fasteners. Apply stud adhesive to Noise Stop Board along studs at 200mm max. centres at least 200mm away from screw points and sheet edges. Screw fasten plasterboard along sheet edges and ends at 300mm centres. Butt joints in plasterboard and Noise Stop Board must not be aligned. No fasteners required in field of board. Hold in place with temporary plasterboard block fastened to centre stud.



Specification notes

State the following:

- Product name and facing density - Fletcher Insulation Noise Stop Board
- Application: Install to one side of partition wall
- Specific locations: eg: all internal framing studs
- Fixing method: Panel or stud adhesive.

Freecall SALES **1300 65 44 44** Technical Services **1800 000 878**

Email info@insulation.com.au Web www.insulation.com.au

NOTE: Fletcher Insulation Pty. Limited. reserves the right to change product specifications without prior notification. Information in this Publication and otherwise supplied to users as to the subject product is based on our general experience and is given in good faith, but Because of the many particular factors which are outside our knowledge and control and affect the use of products, no warranty is given Or is to be implied with respect to either such information or the product itself, in particular the suitability of the product for any particular purpose. The purchaser should independently determine the suitability of the product for the intended application.

Fletcher Insulation Pty. Limited. ABN 72 001 175 355. TMTrademarks of Fletcher Insulation. TMFBS-1 Bio-Soluble Glass Wool is a trademark used under license by Fletcher Insulation. © Copyright 2010.

TDS24 / FI_0022_000610_20



The production of environmentally sustainable FBS-1 Glasswool Bio-Soluble Insulation utilizes approximately 70% recycled waste glass.



Fletcher Insulation glasswool products are manufactured from FBS-1 Bio-Soluble Glass WoolTM. FBS-1 Bio-Soluble Glass WoolTM is not classified as hazardous according to the criteria of the Australian Safety and Compensation Council (formerly NOHSC), Approved Criteria for Classifying Hazardous Substances (NOHSC: 1008) 3rd Edition. Fletcher Insulation glasswool is classified as safe to use, refer to our MSDS.



FletcherTM
Insulation