

## Quiet Batts

### Commercial acoustic partition insulation

#### Product description and typical applications

Quiet Batts are made from lightweight, flexible and resilient glasswool (sometimes referred to as mineral wool), specially designed to be free standing for quick installation in steel stud framing for commercial and residential buildings. Quiet Batts (11kg / m<sup>3</sup>) are designed to give effective sound absorption and to reduce noise transfer between rooms at an economical cost. Quiet Batts provide a proven solution to achieving a minimum Rw45 wall - required by the BCA for aged care homes.

#### Physical characteristics

Material R-value (m <sup>2</sup> k/w)	Batt Size (mm)	Thickness (mm)	Pieces Per Pack	Area Per Pack (m <sup>2</sup> )
R1.2	1200 x 450	50	24	13.0
	2700 x 450	50	24	29.2
	1200 x 600	50	24	17.3
	2700 x 600	50	16	25.9
R1.8	1200 x 450	75	16	8.6
	2700 x 450	75	24	29.2
	1200 x 600	75	16	11.5
	2700 x 600	75	16	25.9
R2.1	1200 x 450	90	16	8.6
	2700 x 450	90	24	29.2
	1200 x 600	90	16	11.5
	2700 x 600	90	16	25.9

AS/NZS 4859.1: 2002 - Including Amendment 1  
Materials for the Thermal Insulation of Buildings

Quiet Batts comply with the Energy Efficiency provisions of the BCA for all types of thermal insulation to be certified by a NATA accredited organisation.



Global-Mark.com.au®



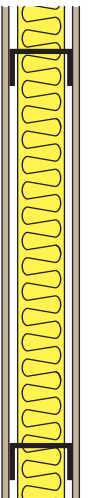
#### Rw 45 Tested wall system

CSIRO acoustic testing laboratory has confirmed that the wall system consisting of 92mm steel stud with one layer of 13mm fire-rated plasterboard on each side and 90mm Quiet Batts infill will achieve an Rw45.

Using Acousti-Max software, Fletcher Insulation Technical Services are able to rapidly compare the noise transmission loss for different types of wall construction including concrete, brick, hebel, timber and steel with various types of wall linings and insulation infill to find out the optimum acoustic performance.

#### Green Star compliant

Fletcher Insulation is committed to providing environmentally sustainable products. Fletcher Insulation products have Zero Ozone Depleting Potential in both manufacture and composition, complying with the GreenStar Insulant ODP Emissions credit requirement. Air quality is maintained with total Volatile Organic Compound (VOC) emissions below quantifiable levels.



## AS1530.1 Test for combustibility of materials

Testing conducted by CSIRO in accordance with AS1530 Part 1 concluded that Quiet Batts are non-combustible.

The BCA deemed to satisfy provisions require walls important to the structural integrity of commercial buildings to be constructed wholly of materials that are non-combustible. Fire rated (FRL) walls between tenancies and common walls of multi-level apartment buildings also must be constructed wholly of materials that are non-combustible. The BCA states that if materials used in an assembly contain combustible components, then the assembly is combustible.

Incorporating non-combustible Quiet Batts into wall systems allows builders to gain acoustic and thermal benefits while still complying with the BCA requirement to maintain structural integrity and for minimizing risk to occupants from smoke inhalation and fire in Class 2 to 9 buildings.

## AS1530.3 Early fire hazard properties of materials

Quiet Batts exhibit the following characteristics when tested in accordance with AS1530 Part 3.

Ignitability Index	0
Spread of Flame Index	0
Heat Evolved Index	0
Smoke Developed Index	0-1

## Moisture resistance

In the event of Quiet Batts becoming wet, they should be dried prior to installation to obtain maximum performance and prevent damage to other building elements. Quiet Batts absorb less than 0.2% moisture by volume when exposed to environmental conditions of 50°C and 95% relative humidity for four days.

## Alkalinity

When tested in accordance with British Standard 3958, Fletcher Insulation glasswool products are slightly alkaline pH9 (neutral is pH7). They will not promote or accelerate the corrosion of steel or galvanised steel studs provided they are protected from external contamination.

## Maximum service temperature

Fletcher Insulation Quiet Batts have a maximum service temperature of 340°C.

## Specification notes

### State the following:

- Product name - Quiet Batts
- Material R-Value required
- Joist or stud spacing
- Area involved.

Freecall SALES **1300 65 44 44** Technical Services **1800 000 878**  
Email [info@insulation.com.au](mailto:info@insulation.com.au) Web [www.insulation.com.au](http://www.insulation.com.au)

NOTE: Fletcher Insulation Pty. Limited. reserves the right to change product specifications without prior notification. Information in this Publication and otherwise supplied to users as to the subject product is based on our general experience and is given in good faith, but Because of the many particular factors which are outside our knowledge and control and affect the use of products, no warranty is given Or is to be implied with respect to either such information or the product itself, in particular the suitability of the product for any particular purpose. The purchaser should independently determine the suitability of the product for the intended application.

Fletcher Insulation Pty. Limited. ABN 72 001 175 355. <sup>TM</sup>Trademarks of Fletcher Insulation. <sup>TM</sup>FBS-1 Bio-Soluble Glass Wool is a trademark used under license by Fletcher Insulation. © Copyright 2010.

TDS31 / FL\_0022\_000610\_18



The production of environmentally sustainable FBS-1 Glasswool Bio-Soluble Insulation utilizes approximately 70% recycled waste glass.



Low Allergen content with the ability to moderate temperature changes.



Fletcher Insulation glasswool products are manufactured from FBS-1 Bio-Soluble Glass Wool™. FBS-1 Bio-Soluble Glass Wool™ is not classified as hazardous according to the criteria of the Australian Safety and Compensation Council (formerly NOHSC), Approved Criteria for Classifying Hazardous Substances (NOHSC: 1008) 3rd Edition. Fletcher Insulation glasswool is classified as safe to use, refer to our MSDS.



**Fletcher**  
Insulation