

TuffStuff™ by Sisalation®

Extra Heavy Duty Wall Wrap (Breather)

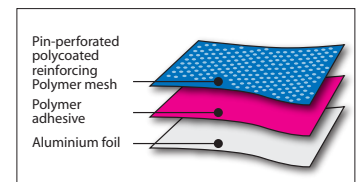
Product description and typical applications

Tuffstuff™ by Sisalation® Extra Heavy Duty Wall Wrap (Breather) is a single sided poly weave foil recommended for use as a wall wrap behind permeable light weight cladding, such as CFC, for domestic and commercial buildings. Tuffstuff by Sisalation (Breather) is a very strong, tear resistant, vapour permeable membrane that prevents the buildup of trapped moisture between the cladding and foil when no air gap exists. It also provides an effective barrier against rain, wind, and dust penetration during construction when overlapped. Tuffstuff by Sisalation (Breather) is suitable for use in buildings in bushfire prone areas.

Physical characteristics

Roll	Width	Length	Area	Weight
	1350mm	60m	81m ²	10kg
	1350mm	30m	40.5m ²	7kg

Tuffstuff by Sisalation (Breather) has a layer of aluminium foil bonded to a polymer based weave of high tensile and tear strength. The blue face of the weave reduces any problems with reflected glare during installation. The composite material is pin perforated to allow free passage of moisture through the membrane preventing condensation within the wall space in cold climates



Duty Classification:	Extra Heavy Duty
Water Barrier:	Unclassified
Emittance of Reflective Face:	0.03
Emittance of Antiglare Face:	0.1
Flammability Index:	≤ 5 when tested in conformance with AS 1530.2.
Nominal Weight:	117gsm
Tensile Strength Machine Direction (kN/m):	Min 13.0
Tensile Strength Lateral Direction (kN/m):	Min 10.5
Edge Tear Resistance Machine Direction (N):	Min 90
Edge Tear Resistance Lateral Direction (N):	Min 90

Green Star compliant

Fletcher Insulation is committed to providing environmentally sustainable products. Fletcher Insulation products have Zero Ozone Depleting Potential in both manufacture and composition, complying with the GreenStar Insulant ODP Emissions credit requirement. Air quality is maintained with Total Volatile Organic Compound (VOC) emissions below quantifiable levels.

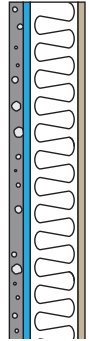
Thermal performance

Brick Veneer Wall
Non-ventilated

Summer
Total R2.2

Winter
Total R2.5

Calculations incorporate R2.0 wall batts that are no greater than 90mm thick in a 90mm timber stud wall incorporating Tuffstuff by Sisalation (Breather) directly behind external CFC cladding. Total R-values excluding the batts are R0.9 (Summer) and R1.0 (Winter). When used in conjunction with an airspace, Sisalation is an effective thermal insulation material because of the high reflectivity and low emissivity of its aluminium foil surfaces. Tuffstuff by Sisalation (Breather) complies with the requirements of AS/NZS4859.1. The contribution of this product to Total R-value depends on installation and adjacent air space.



Comprehensive calculations of Total R-values for typical wall systems is illustrated in the ICANZ Insulation Handbook which can be found at: www.icanz.org.au>PublicationsandReports>InsulationHandbook or contact Fletcher Insulation Technical Services 1800 000 878.

Installation

Tuffstuff by Sisalation (Breather) should be installed in accordance with AS/NZS4200.2 for the Installation Requirements for "Pliable Building Membranes". It should be installed with a 150mm overlap between runs. Although Tuffstuff Breather is designed to withstand weathering for up to 2 months, external cladding should be installed without delay.

Aluminium foil is susceptible to alkali attack and therefore should not come in contact with wet concrete.

Health and safety

There are no known health or safety risks associated with this product for applications described in this datasheet.

For additional information or to request a Material Safety Data Sheet please visit: www.sisalation.com.au or contact your nearest Fletcher Insulation office.

Specification notes

Tuffstuff™ by Sisalation® Extra Heavy Duty Wall Wrap (Breather) complies with the requirements of AS/NZS4200.1: 1994 for "Pliable Building Membranes" which is the deemed to satisfy standard recognised by the BCA Part 3.5 for Wall Cladding. It has a low flammability index (not greater than 5) in accordance with AS1530.2; 1993 which satisfies the BCA Part 3.7.1 Fire Hazard Properties (Class 1 & 10 Buildings). It also satisfies BCA Specification C1.10 2(a) Fire Hazard Properties (Class 2 to 9 Buildings), as a sarking material.

When specifying, state the following:

Application: Wall Wrap

Product Name: Tuffstuff™ by Sisalation® Extra Heavy Duty Wall Wrap (Breather)

Tuffstuff by Sisalation (Breather) shall be installed to the external side of the timber stud wall frame with foil tacks, or steel frame with short flat head Tek screws.



CERTIFIED SAFETY
MANAGEMENT SYSTEM
AS/NZS 4801



CERTIFIED QUALITY
MANAGEMENT SYSTEM
ISO 9001



TuffStuff™ by Sisalation®

Extra heavy duty wall wrap (standard)

Product description and typical applications

Tuffstuff™ by Sisalation® Extra Heavy Duty Wall Wrap (Standard) is recommended for use as a wall wrap (typically brick veneer) for domestic and commercial buildings.

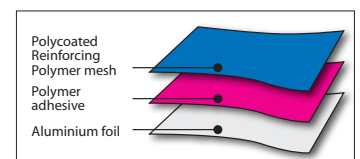
Tuffstuff by Sisalation is suitable for use in buildings in bushfire prone areas. It is a protective membrane that provides resistance to puncturing and tearing. It also provides an effective barrier against moisture, vapours, wind, heat and dust penetration when overlapped.

Physical characteristics

Roll	Width	Length	Area	Weight
	1350mm	60m	81m ²	10kg
	1350mm	30m	40.5m ²	5kg

Tuffstuff by Sisalation has a layer of aluminium foil bonded to a polymer based weave of high tensile and tear strength. The blue face of the weave reduces any problems with reflected glare during installation.

Duty Classification:	Extra Heavy Duty
Vapour Barrier:	High
Water Barrier:	Medium
Emittance of Reflective Face:	0.03
Emittance of Antiglare Face:	0.1
Flammability Index:	≤ 5 when tested in conformance with AS 1530.2.
Nominal Weight:	117gsm
Tensile Strength Machine Direction (kN/m):	Min 13.0
Tensile Strength Lateral Direction (kN/m):	Min 10.5
Edge Tear Resistance Machine Direction (N):	Min 90
Edge Tear Resistance Lateral Direction (N):	Min 90



Green Star compliant

Fletcher Insulation is committed to providing environmentally sustainable products. Fletcher Insulation products have Zero Ozone Depleting Potential in both manufacture and composition, complying with the GreenStar Insulant ODP Emissions credit requirement. Air quality is maintained with Total Volatile Organic Compound (VOC) emissions below quantifiable levels.

Thermal performance

Brick Veneer Wall
Non-ventilated

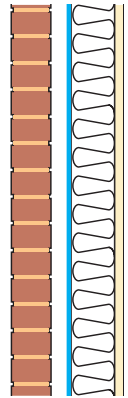
Summer
Total R2.5

Winter
Total R2.7s

Calculations incorporate R2.0 wall batts that are no greater than 90mm thick in a 90mm timber stud wall incorporating Tuffstuff by Sisalation on the outside of the frame next to a 50mm air cavity. Total R-values excluding the batts are R1.2 (Summer) and R1.3 (Winter).

When used in conjunction with an airspace, Sisalation is an effective thermal insulation material because of the high reflectivity and low emissivity of its aluminium foil surfaces. Tuffstuff by Sisalation complies with the requirements of AS/NZS4859.1. The contribution of this product to Total R-value depends on installation and adjacent air space.

Comprehensive calculations of Total R-values for typical wall systems is illustrated in the ICANZ Insulation Handbook which can be found at www.icanz.org.au>PublicationsandReports>InsulationHandbook or contact Fletcher Insulation Technical Services 1800 000 878.



Installation

Tuffstuff™ by Sisalation should be installed in accordance with AS/NZS4200.2 for the Installation Requirements for “Pliable Building Membranes”. It should be installed with a 150mm overlap between runs. Although Tuffstuff is designed to withstand weathering for up to 2 months, external cladding should be installed without delay.

Tuffstuff™ by Sisalation should only be installed as a wall wrap and never as a sarking material under either a tiled or metal roof.

Health and safety

There are no known health or safety risks associated with this product for applications described in this datasheet.

For additional information or to request a Material Safety Data Sheet please visit: www.sisalation.com.au or contact your nearest Fletcher Insulation office.

Specification notes

Tuffstuff™ by Sisalation® Extra Heavy Duty Wall Wrap (Standard) complies with the requirements of AS/NZS4200.1: 1994 for “Pliable Building Membranes” which is the deemed to satisfy standard recognised by the BCA Part 3.5 for Wall Cladding. It has a low flammability index (not greater than 5) in accordance with AS1530.2: 1993 which satisfies the BCA Part 3.7.1 Fire Hazard Properties (Class 1 & 10 Buildings). It also satisfies BCA Specification C1.10 2(a) Fire Hazard Properties (Class 2 to 9 Buildings), as a sarking type material.

When specifying, state the following:

Application: Wall Wrap

Product Name: Tuffstuff™ by Sisalation® Extra Heavy Duty Wall Wrap (Standard)

Tuffstuff by Sisalation shall be installed to the external side of the timber stud wall frame with foil tacks, or steel frame with short flat head Tek screws.



CERTIFIED SAFETY
MANAGEMENT SYSTEM
AS/NZS 4801



CERTIFIED QUALITY
MANAGEMENT SYSTEM
ISO 9001



Titantuff™ by Sisalation®

Medium Duty Wall Wrap (Standard)

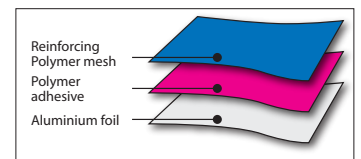
Product description and typical applications

Titantuff™ by Sisalation® Medium Duty Wall Wrap (Standard) is an economical wall wrap typically used behind brick veneer walls for domestic and commercial buildings. Titantuff™ by Sisalation® is suitable for use in buildings in bushfire prone areas. It is a protective membrane that provides resistance to puncturing and tearing. It also provides an effective barrier against moisture, vapours, wind, heat and dust penetration when overlapped. Particularly when sealed with Sisalation® Vapastop® 883 self adhesive aluminium tape.

Physical characteristics

Roll Size	Width	Length	Area	Weight
	1350mm	60m	81m ²	7.7kg
	1350mm	30m	40.5m ²	3.8kg

Titantuff™ by Sisalation® has a layer of aluminium foil bonded to a tear resistant polymer based weave. The blue face of the weave reduces any problems with reflected glare during installation.



Duty Classification:	Medium Duty
Vapour Barrier:	High
Water Barrier:	Medium
Emittance of Reflective Face:	0.03
Emittance of Antiglare Face:	0.1
Flammability Index:	≤ 5 when tested in conformance with AS 1530.2.
Nominal Weight:	95gsm
Tensile Strength Machine Direction (kN/m):	Min 9.5
Tensile Strength Lateral Direction (kN/m):	Min 6.0
Edge Tear Resistance Machine Direction (N):	Min 65
Edge Tear Resistance Lateral Direction (N):	Min 65

Green Star compliant

Fletcher Insulation is committed to providing environmentally sustainable products. Fletcher Insulation products have Zero Ozone Depleting Potential in both manufacture and composition, complying with the GreenStar Insulant ODP Emissions credit requirement. Air quality is maintained with Total Volatile Organic Compound (VOC) emissions below quantifiable levels.



Thermal performance

Brick Veneer Wall
Non-ventilated

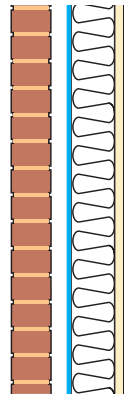
Summer
Total R2.2

Winter
Total R2.5

Calculations incorporate R2.0 wall batts that are no greater than 90mm thick in a 90mm timber stud wall incorporating Titantuff™ by Sisalation® on the outside of the frame next to a 50mm air cavity. Total R-values excluding the batts are R1.2 (Summer) and R1.3 (Winter).

When used in conjunction with an airspace, Sisalation® is an effective thermal insulation material because of the high reflectivity and low emissivity of its aluminium foil surfaces. Titantuff™ by Sisalation® complies with the requirements of AS/NZS4859.1: 2002, Amendment 1. The contribution of this product to Total R-value depends on installation and adjacent air space.

Comprehensive calculations of Total R-values for typical wall systems is illustrated in the ICANZ Insulation Handbook which can be found at: www.icanz.org.au>PublicationsandReports>InsulationHandbook or contact Fletcher Insulation Technical Services 1800 000 878.



Installation

Titantuff™ by Sisalation® should be installed in accordance with AS/NZS4200.2 for the Installation Requirements for “Pliable Building Membranes”. It should be installed with a 150mm overlap between runs. External cladding should be installed without delay.

Titantuff™ by Sisalation® should only be installed as a wall wrap and never as a sarking material under either a tiled or metal roof.

Aluminium foil is susceptible to alkali attack and therefore should not come in contact with wet concrete.

Health and safety

There are no known health or safety risks associated with this product for applications described in this datasheet.

For additional information or to request a Material Safety Data Sheet please visit : www.sisalation.com.au or contact your nearest Fletcher Insulation office.

Specification notes

Titantuff™ by Sisalation® Medium Duty Wall Wrap (Standard) complies with the requirements of AS/NZS4200.1: 1994 for “Pliable Building Membranes” which is the deemed to satisfy standard recognised by the BCA Part 3.5 for Wall Cladding. It has a low flammability index (not greater than 5) in accordance with AS1530.2: 1993 which satisfies the BCA Part 3.7.1 Fire Hazard Properties (Class 1 & 10 Buildings). It also satisfies BCA Specification C1.10 2(a) Fire Hazard Properties (Class 2 to 9 Buildings), as a sarking type material.

When specifying, state the following:

Application: Wall Wrap

Product Name: Titantuff™ by Sisalation® Medium Duty Wall Wrap (Standard)

Titantuff™ by Sisalation® shall be installed to the external side of the timber stud wall frame with foil tacks, or steel frame with short flat head Tek screws.

Freecall SALES **1300 65 44 44** Technical Services **1800 000 878**

Email info@insulation.com.au Web www.insulation.com.au



CERTIFIED SAFETY
MANAGEMENT SYSTEM
AS/NZS 4801



CERTIFIED QUALITY
MANAGEMENT SYSTEM
ISO 9001



Titantuff™ by Sisalation®

Medium Duty Wall Wrap (Breather)

Product Description and Typical Applications

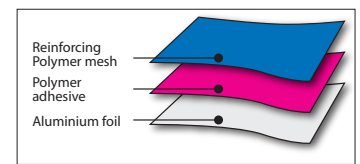
Titantuff™ by Sisalation® Medium Duty Wall Wrap (Breather) is an economical single sided poly weave foil recommended for use as a wall wrap behind permeable light weight cladding, such as CFC, for domestic and commercial buildings.

Titantuff™ by Sisalation® (Breather) is a tear resistant, vapour permeable membrane that prevents the buildup of trapped moisture between the cladding and foil when no air gap exists. It also provides an effective barrier against rain, wind, and dust penetration during construction when overlapped. Particularly when sealed with Sisalation® Vapastop® 883 self adhesive aluminium tape. Titantuff™ by Sisalation® (Breather) is suitable for use in buildings in bushfire prone areas.

Physical Characteristics

Roll Size	Width	Length	Area	Weight
	1350mm	60m	81m ²	7.7kg
	1350mm	30m	40.5m ²	3.8kg

Titantuff™ by Sisalation® (Breather) has a layer of aluminium foil bonded to a polymer based weave. The blue face of the weave reduces any problems with reflected glare during installation. The composite material is pin perforated to allow free passage of moisture through the membrane preventing condensation within the wall space in cold climates



Classification:	Medium Duty
Vapour Barrier:	Low
Water Barrier:	Unclassified
Emittance of Reflective Face:	0.03
Emittance of Antiglare Face:	0.1
Flammability Index:	≤ 5 when tested in conformance with AS 1530.2.
Nominal Weight:	95gsm
Tensile Strength Machine Direction (kN/m):	Min 9.5
Tensile Strength Lateral Direction (kN/m):	Min 6.0
Edge Tear Resistance Machine Direction (N):	Min 65
Edge Tear Resistance Lateral Direction (N):	Min 65

Green Star Compliant

Fletcher Insulation is committed to providing environmentally sustainable products. Fletcher Insulation products have Zero Ozone Depleting Potential in both manufacture and composition, complying with the GreenStar Insulant ODP Emissions credit requirement. Air quality is maintained with Total Volatile Organic Compound (VOC) emissions below quantifiable levels.



Thermal Performance

Brick Veneer Wall
Non-ventilated

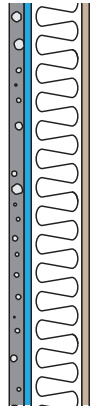
Summer
Total R2.2

Winter
Total R2.5

Calculations incorporate R2.0 wall batts that are no greater than 90mm thick in a 90mm timber stud wall incorporating Titantuff™ by Sisalation® (Breather) directly behind external CFC cladding. Total R-values excluding the batts are R0.9 (Summer) and R1.0 (Winter).

When used in conjunction with an airspace, Sisalation® is an effective thermal insulation material because of the high reflectivity and low emissivity of its aluminium foil surfaces. Titantuff™ by Sisalation® (Breather) complies with the requirements of AS/NZS4859.1: 2002, Amendment 1. The contribution of this product to Total R-value depends on installation and adjacent air space.

Comprehensive calculations of Total R-values for typical wall systems is illustrated in the ICANZ Insulation Handbook which can be found at: www.icanz.org.au>PublicationsandReports>InsulationHandbook or contact Fletcher Insulation Technical Services 1800 000 878.



Installation

Titantuff™ by Sisalation® (Breather) should be installed in accordance with AS/NZS4200.2 for the Installation Requirements for "Pliable Building Membranes". It should be installed with a 150mm overlap between runs. External cladding should be installed without delay.

Titantuff™ by Sisalation® (Breather) should only be installed as a wall wrap and never as a sarking material under either a tiled or metal roof.

Aluminium foil is susceptible to alkali attack and therefore should not come in contact with wet concrete.

Health and safety

There are no known health or safety risks associated with this product for applications described in this datasheet.

For additional information or to request a Material Safety Data Sheet please visit : www.sisalation.com.au or contact your nearest Fletcher Insulation office.

Specification notes

Titantuff™ by Sisalation® Medium Duty Wall Wrap (Breather) complies with the requirements of AS/NZS4200.1: 1994 for "Pliable Building Membranes" which is the deemed to satisfy standard recognised by the BCA Part 3.5 for Wall Cladding. It has a low flammability index (not greater than 5) in accordance with AS1530.2: 1993 which satisfies the BCA Part 3.7.1 Fire Hazard Properties (Class 1 & 10 Buildings). It also satisfies BCA Specification C1.10 2(a) Fire Hazard Properties (Class 2 to 9 Buildings), as a sarking type material.

When specifying, state the following:

Application: Wall Wrap

Product Name: Titantuff™ by Sisalation® Medium Duty Wall Wrap (Breather)

Titantuff™ by Sisalation® shall be installed to the external side of the timber stud wall frame with foil tacks, or steel frame with short flat head Tek screws.

Freecall SALES **1300 65 44 44** Technical Services **1800 000 878**

Email info@insulation.com.au Web www.insulation.com.au



CERTIFIED SAFETY
MANAGEMENT SYSTEM
AS/NZS 4801



CERTIFIED QUALITY
MANAGEMENT SYSTEM
ISO 9001

